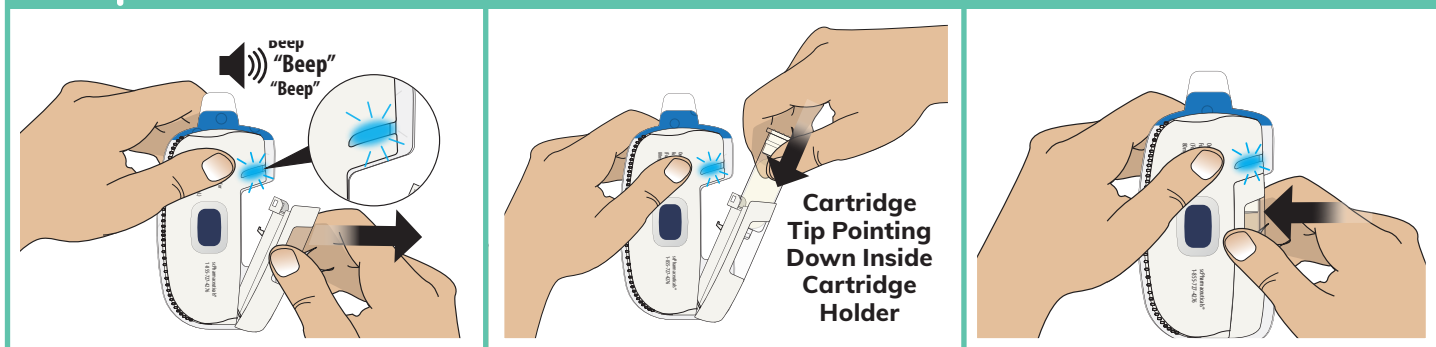
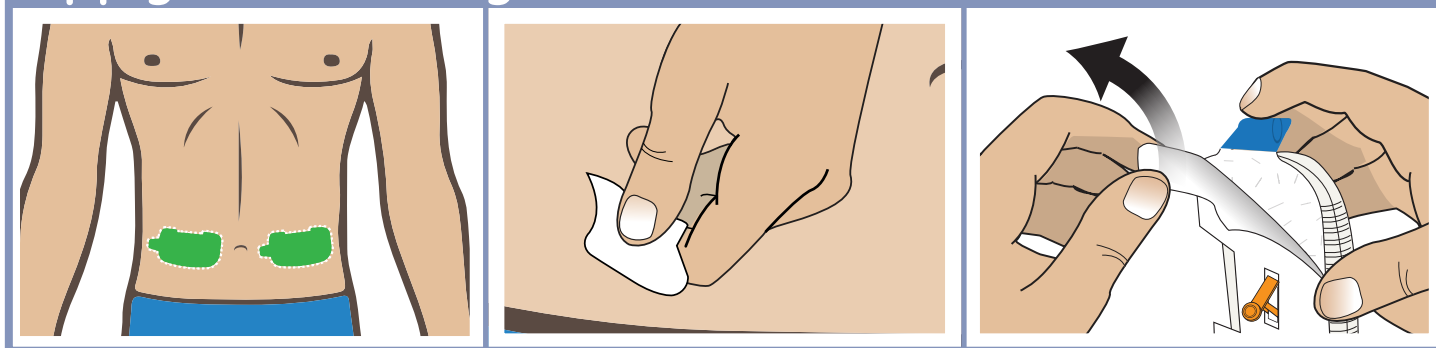


This guide is an overview of some steps to prepare and apply the On-Body Infusor for FUROSCIX. This guide is intended for demonstration purposes only. It does not replace the Instructions For Use when using the On-Body Infusor for FUROSCIX. Do not use the On-Body Infusor if the packaging, the Infusor, or the cartridge appear to be opened or damaged, if the liquid in the cartridge is discolored or cloudy, or after the expiration date on the carton. Read the Instructions for Use before using the On-Body Infusor for FUROSCIX.

Prepare for the Infusion



Apply the On-Body Infusor



Do not open the cartridge holder until you are ready to begin the infusion. Once it is opened you have 30 minutes to start the infusion.

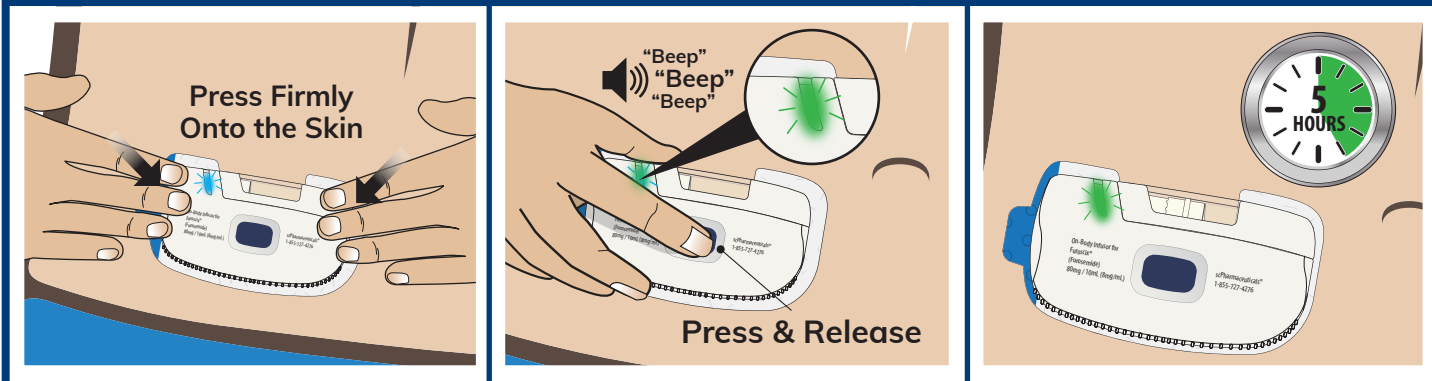
Do not press the blue start button prior to placement of the On-Body Infusor on the abdomen.

Do not pull or remove the blue tab from the On-Body Infusor.

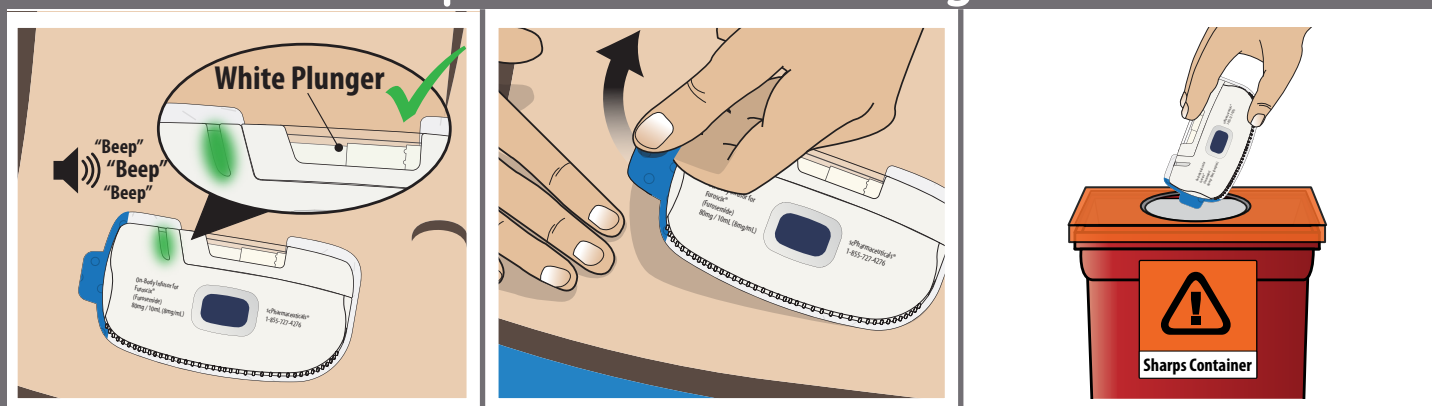
Apply the On-Body Infusor while standing or sitting up straight and run your finger over the adhesive edge. Do not apply to an area of the stomach with a skin fold.

Please review [Full Prescribing Information](#) and [Instructions For Use](#).

Start the Infusion



Remove and Dispose of the On-Body Infusor



The infusion will last about 5 hours. During use limit activity so that your bending movements are limited. We do not recommend riding in a car or flying in an airplane.

Take care not to bump or knock off the the On-Body Infusor from your stomach while in use.

Do not let the On-Body Infusor get wet from water or any other liquids. Do not shower, bathe, swim or do activities that may make you sweat while wearing the On-Body Infusor.

Please review [Full Prescribing Information](#) and [Instructions For Use](#).



SCAN ME
to watch the FUROSCIX
Application Animation
or visit [FUROSCIX.com](https://www.furoscix.com)